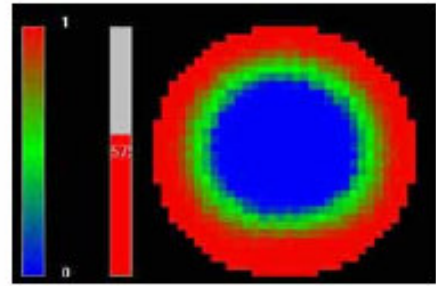


PTL300 Sample Applications

Imaging Gas in Oil



ECT sensor for monitoring oil/gas flows



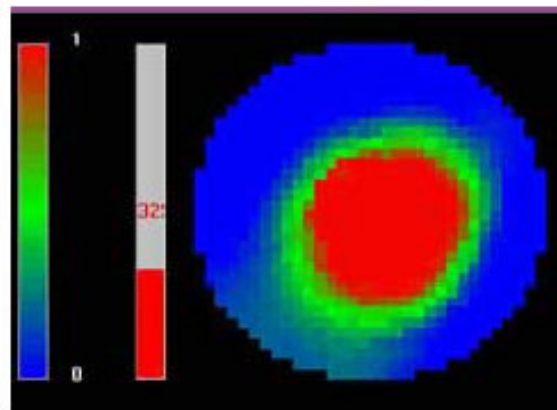
ECT image of large air bubble in vertical flow

The illustration shows a 15cm diameter clear plastic pipe containing a mixture of oil and gas. An external 12 element capacitance sensor is shown attached to the pipe. The ECT image shows a large gas bubble passing through the sensor when the sensor axis is vertical. The image format is based on a normalised permittivity scale which progresses from zero (blue) through green, to a maximum value of 1 (red). In this case, the blue area of the image represents the gas bubble and the red area of the image represents the oil.

PTL300 - Imaging Flames



ECT flame and combustion sensor



ECT image of flame

The figure shows a 6 element capacitance sensor constructed inside an aluminium cylinder of internal diameter 10cm. The ECT image was obtained using a butane flame positioned approximately in the centre of the sensor. The image format is based on a normalised permittivity scale which progresses from zero (blue) through green, to a maximum value of 1 (red). In this case, the red area of the image represents the flame location.

PROCESS TOMOGRAPHY LTD

64, Courthill House, Water Lane, Wilmslow, Cheshire. SK9 5AJ United Kingdom.

Phone/Fax 01625-418722

(From outside UK +44-1625-418722)

email: enquiries@tomography.com Web site: www.tomography.com