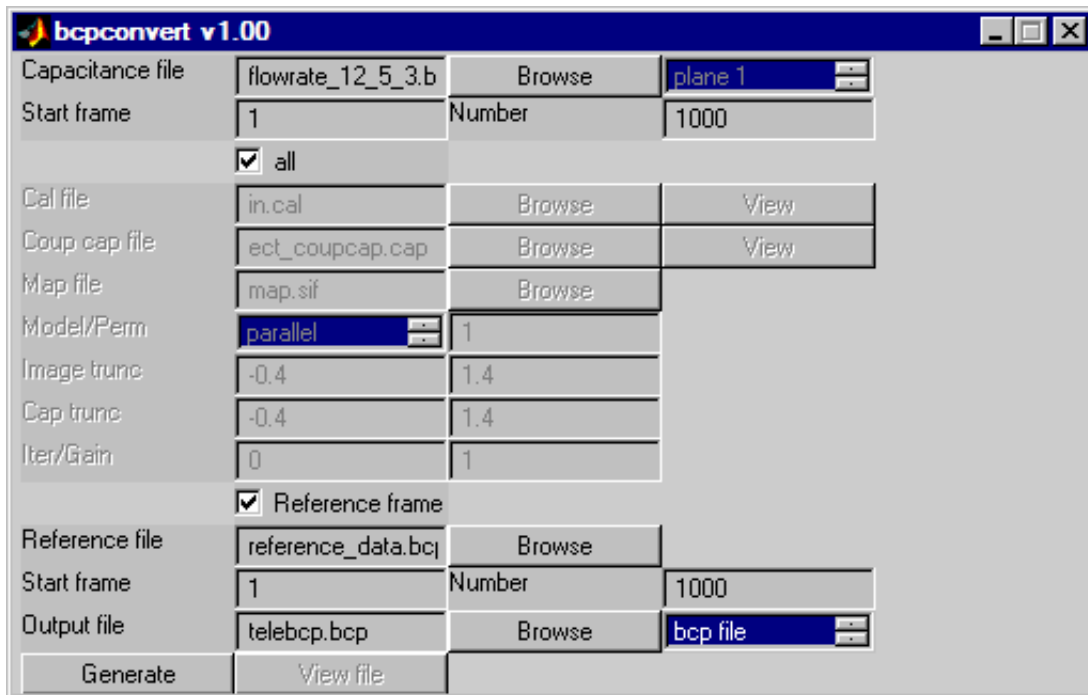


## FILE CONVERSION SOFTWARE BCP CONVERT FOR ELECTRICAL CAPACITANCE TOMOGRAPHY

The **PTL BCP CONVERT** software converts a captured **normalised capacitance (.bcp) data file** into a range of alternative file formats, including **image** and **absolute capacitance** files. A **reference file** can also be used to compensate for the effects of any residual offsets or measurement drift in the original measured data file. The **BCP CONVERT** software is supplied as either a **stand-alone executable** program file or as a **Matlab .m file**.



**The BCP CONVERT program window**

The various data, scroll and tick boxes shown in the **BCP CONVERT** window are used to enter the input and output data. Note that the data to be entered depends on the form of output data required.

The **BCP CONVERT** program is supplied as a stand-alone program file and also as a **Matlab m file**.

### FURTHER INFORMATION

For further information, please contact our sales department at the address below or email us at [enquiries@tomography.com](mailto:enquiries@tomography.com)

---

#### PROCESS TOMOGRAPHY LTD

64, Courthill House, Water Lane, Wilmslow, Cheshire. SK9 5AJ United Kingdom.

Phone/Fax 01625-418722

(From outside UK +44-1625-418722)

email: [enquiries@tomography.com](mailto:enquiries@tomography.com) Web site: [www.tomography.com](http://www.tomography.com)

---

Registered in England No. 2908507. Registered Office 15, Croft Road, Wilmslow, Cheshire. SK9 6JJ United Kingdom.